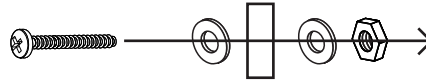


ASSEMBLY INSTRUCTIONS

Tools Needed: Philips screwdriver or power drill (optional)

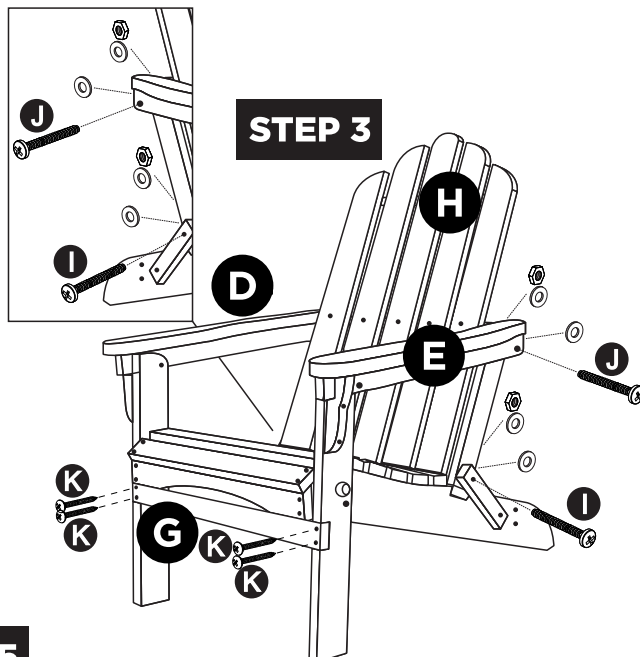
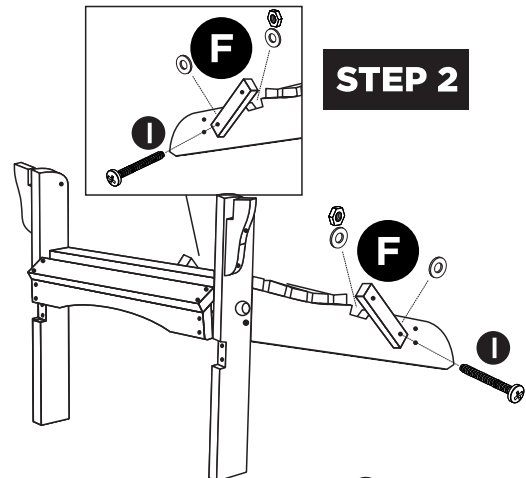
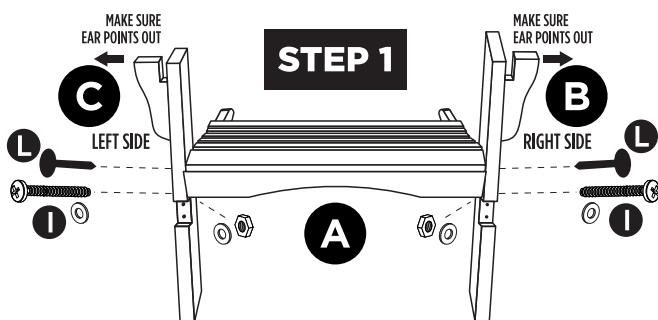
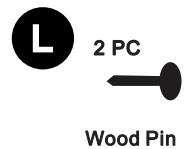
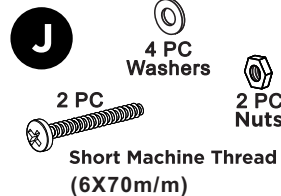
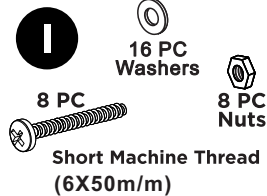
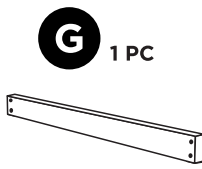
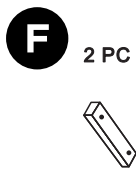
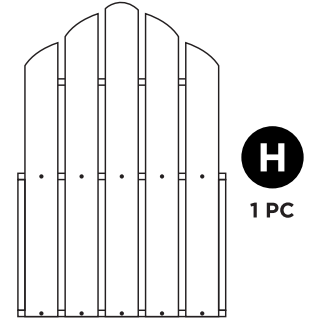
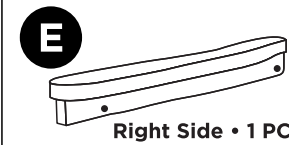
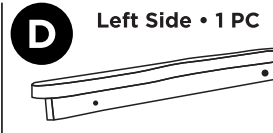
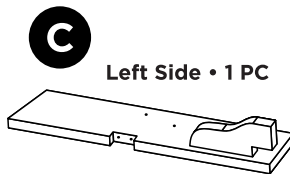
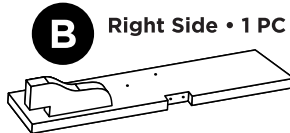
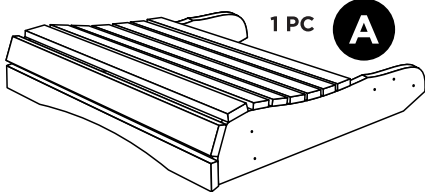
CAUTION: When assembling chair, **DO NOT** completely tighten bolts & nuts until all parts & holes are properly aligned. **All bolts must be assembled with one washer on each side of the wood.**



For missing hardware please contact customerservice@shineco.com

PARTS LIST

IMPORTANT: All Left & Right Side directions are from the perspective of looking at the front of the chair.



STEP 5

TIGHTEN ALL NUTS AND BOLTS WHEN YOU ARE COMPLETELY DONE ASSEMBLING THE CHAIR.